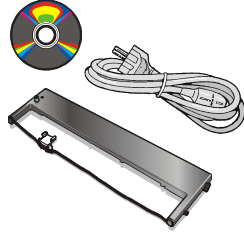


SP40plus Quick Reference Guide

Unpacking the Printer

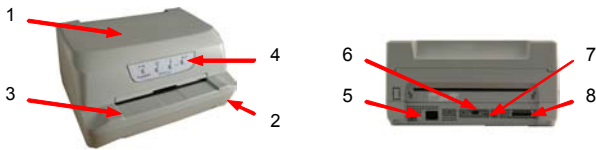
Together with the printer the following items are included in the shipment box:

- Ribbon Cartridge
- Power Cable
- CD-ROM with printer documentation and drivers
- Quick Reference Guide

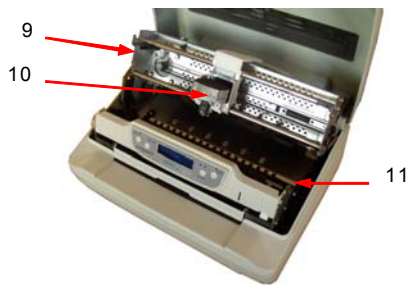


Always keep the packing material in a safe place as you must repack the printer into it, when you need to move it.

Parts of the Printer



- | | |
|----------------------------|---------------------------|
| 1) Printer cover | 5) Power Cable connection |
| 2) Power-on key | 6) Serial I/F |
| 3) Paper Stand | 7) USB I/F |
| 4) Operator Panel (no LCD) | 8) Parallel I/F |



- | | |
|---------------------------|-------------------|
| 9) Upper Mechanical Frame | 11) Printing Area |
| 10) Print Head | |

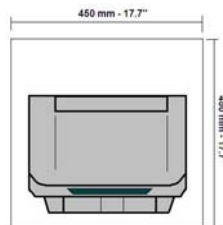
Printer Installation

Consider the following points when you choose the location for your printer:

- The distance between the printer and the host computer must not exceed the length of the interface cable;
- The location must be sturdy, horizontal and stable;
- Your printer must not be exposed to direct sunlight, extreme heat, cold, dust or humidity;

Choosing a Suitable Location

When printing on standard paper formats, the paper comes out partially on the rear side of the printer. Make sure that behind the printer there is sufficient clearance to correctly move the paper.



Always use a grounded outlet

Installing the Ribbon Cartridge

In order to avoid damaging the print head or mechanical gears, this printer accepts only original Compuprint ribbon cartridges. Therefore, if you install a not original cartridge, the printer may not work.

Open the printer cover

- 1) Remove the cartridge from its bag and Unhook the green ribbon mask from the cartridge pins.



- 2) Open the upper mechanical frame. Locate the open green lever in the left side of the printer. UNLOCK the green lever with the left hand towards the rear of the printer in the open position. Then rise up the lever to its maximum position in order to completely open the head assembly.



Check for the "click" which means the correct open lever position, showed in the inset picture. The printer is now ready to install the ribbon cartridge.



- 3) Turn the tension knob in the direction of the arrow to tighten the ribbon.



- 4) Insert the upper cartridge pins onto the corresponding grooves on both sides of the upper mechanical frame. Then push the lower cartridge pins into the corresponding lower grooves on both sides of the upper mechanical frame until it clicks into place.



- 5) Insert the green plastic ribbon mask onto the print head. Pay attention to match the two pins (2) on both sides of the green ribbon mask with the grooves (1) on both sides of the print head. Push the green ribbon mask up until it clicks into place.



- 6) Turn the tension knob in the direction of the arrow to tighten the ribbon



Carefully pull down the green lever following the step 3 in reverse order in order to securely close the Upper Mechanical Frame. If you do not LOCK the Upper Mechanical Frame, the printer does not print correctly. Close the printer cover.

Remark

The printer detects the amount of printed characters and shows the following attention messages to the operator :

RIBBON NEAR TO END This message appears when the remaining characters to be printed are less than 500.000

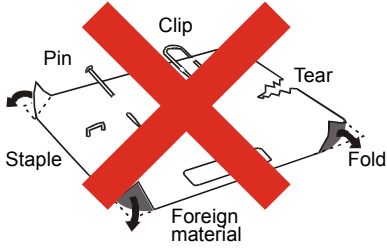
RIBBON EXAUSTED This message appears when the maximum printable characters have been reached and a new ribbon must be installed.

Paper Handling

This printer is designed for versatile and reliable paper handling. The flat-bed mechanism allows the *handling of special documents*, such as multiple invoices, postcards, labels, passbooks and tickets. The print head detects the *paper edges* automatically, the sheet can therefore be inserted in any position within the detection area according to the rules described in the following paragraph. The *paper alignment sensors* determine the alignment of the upper paper margin, adjusting it if necessary.

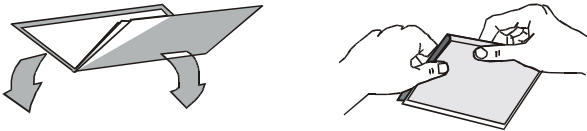
Loading Paper

The inserted documents must not have folds, tears, pins, clips, staples or any foreign material.

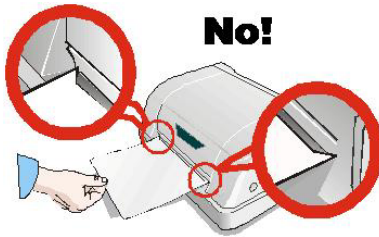


If you insert damaged documents or paper with foreign material, you can seriously damage the printer.

Before inserting a passbook into the printer, open it and create it in both directions along the binding stitch, so that the passbook lays flat on the paper stand when it is inserted into the printer.



The document may not exceed the limits of the paper stand.



Paper Problems

The straight paper path of this printer is designed for trouble-free handling of a great variety of documents.

Paper Jam

In case a paper jam condition occurs, proceed as follows:

1. Open the printer cover. And rise the upper mechanical frame as explained in the chapter: Installing the Ribbon Cartridge, page. Remove the jammed paper, pulling it towards the front of the printer.



2. To have an even better access to the paper path, unlock and rotate down the Operator Panel Group. In case it is not possible to remove the jammed paper because you cannot reach it with your hand or it is embedded so that you cannot move it, rotate the paper belt to free the paper.



Operator Panel

There are two models of operator panel, with or without LCD display.



Function Keys

	NORMAL MODE	SETUP MODE	SPECIAL MODE
ST1	When using the IBM 4722, IBM 9068 and the Olivetti protocols in two operators ("booking") mode, the application software determines the function of this key.	When the Printer is in the Printer Setup mode, pressing this key the operator selects the Configuration Page to be printed.	When pressed while powering the printer on with READY key selects the T&D mode (diagnostic). When pressed while powering the printer on with cover open enters in firmware upgrading procedure.
READY	Toggles the printer between Ready (on-line) and Local (off-line) status.	If pressed in the Printer Setup mode, the printer prints the Self Test Page.	When pressed while powering the printer on, selects the Printer Setup Mode. When pressed while powering the printer on with READY key select the T&D mode (diagnostic).
EJECT	Pressing this key, when the printer is offline, or when the printer is online and no print data are in the buffer, the printer ejects the paper, if inserted (EJECT function). In the Olivetti protocols, the EJECT function may be performed only if the printer is offline.		
ST2 LQ	When using the IBM 4722, IBM 9068 and the Olivetti protocols in two operators ("booking") mode, the application software determines the function of this key. When the printer is offline or when the printer is online and no print data are in the buffer, pressing this key, the printer toggles between Letter Quality and Draft printing mode (no Olivetti)	When the Printer is in the Printer Setup mode, pressing this key the Setup Page selected with the ST1 key will be printed.	When pressed while powering the printer on, selects the HEX_DUMP mode.

Leds

	NORMAL MODE	SETUP MODE	SPECIAL MODE
ST1 ●	Lit if paper presence, Unlit without paper (no Olivetti). When using the IBM 4722, IBM 9068 and the Olivetti protocols in two operators ("booking") mode, the ST1 led is under software control.	If the printer is in Setup Mode, this led indicates which setup page is selected for printing.	Blinks, together with the ST2 led, if a printer error occurs.
READY ●	Lit, when the printer is ready (on line). Unlit, when the printer is in local (off line).	If the printer is in Setup Mode, this led indicates which setup page is selected for printing.	
DATA ●	On, if the printer is powered on without data. Off, if the printer is powered off. Blinks if the printer has data traffic or data in the buffer.	Blinks if the printer is in Setup Mode.	
ST2 ●	Lit when the Letter Quality print mode is selected. Unlit when the Draft printmode is selected. When using the IBM 4722, IBM 9068 and the Olivetti protocols in two operators ("booking") mode, the S2 led is under software control.	If the printer is in Setup Mode, this led indicates which setup page is selected for printing.	Blinks, together with the ST1 led, if a printer error occurs.

Errors Handling

Recoverable errors

The printer is disabled with the ST1 and ST2 led flashing and the printer sounds a beeps.

Press always the READY key to reset the error condition

Not-Recoverable errors

The printer is halted with all the four leds flashing.

Power-off and Power-on the printer. If the problem remains contact the service.

Detailed Informations on the Printer Configuration not reported on this Quick Reference Guide are in the User Manual which can be downloaded in the company web site:

www.compuprint.com